

Retail Space Available

# 2044-2082

# Trans-Canada Hwy

## Dorval, QC



Retail  
Building



Close Proximity to  
Public Transit



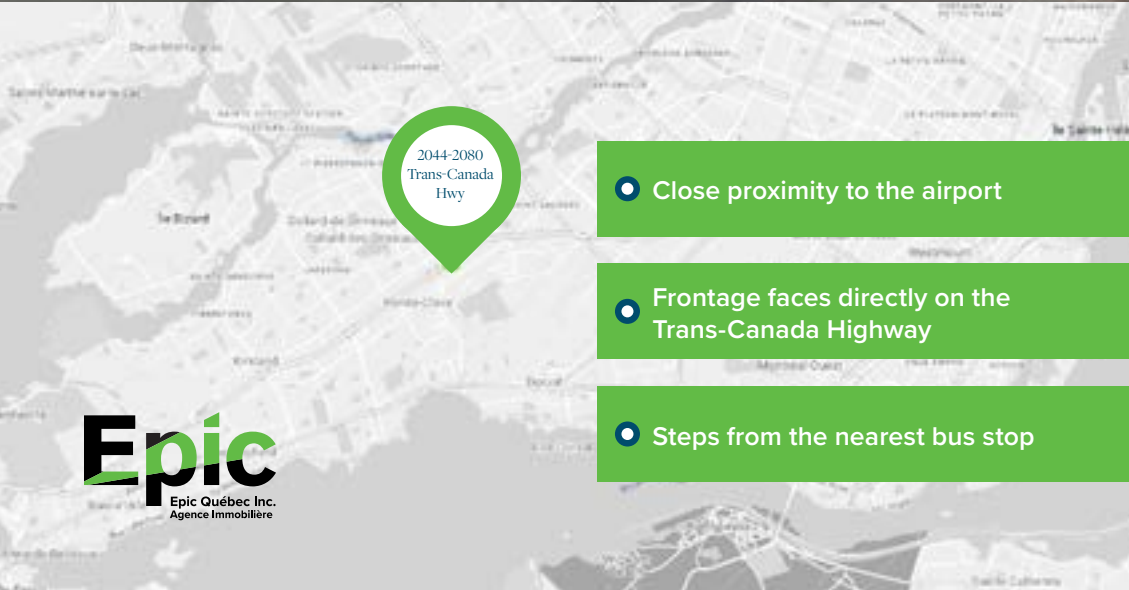
Close Proximity  
To Amenities



Quick Access To  
Major Highways



Trusted  
Landlord



2044-2080  
Trans-Canada  
Hwy

● Close proximity to the airport

● Frontage faces directly on the  
Trans-Canada Highway

● Steps from the nearest bus stop

**Epic**  
Epic Québec Inc.  
Agence Immobilière

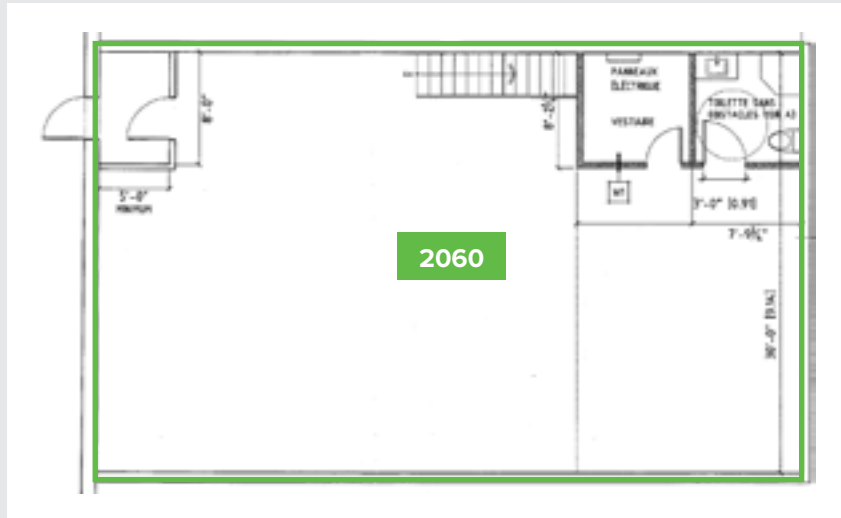
# Leasing opportunities

2044-2082 Trans-Canada Hwy located in Dorval is right on the Trans- Canada Hwy with excellent exposure and visibility to the highway.

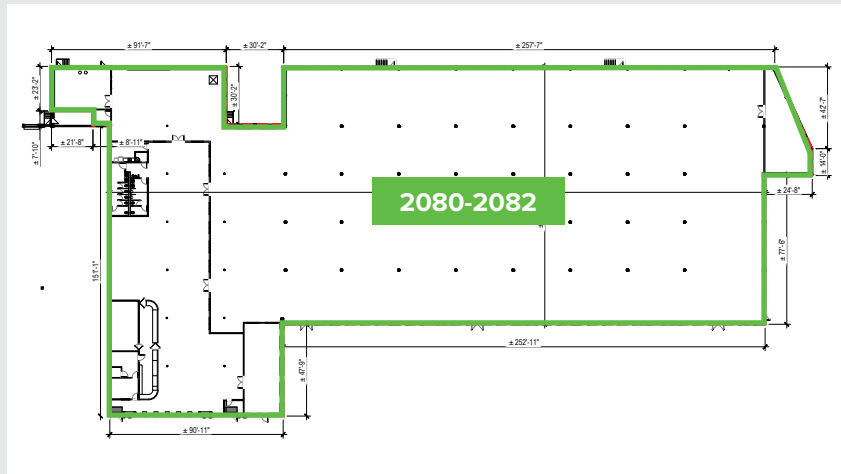
The property features a bus stop just steps from the property and the close proximity to the Trans-Canada Hwy allows for easy access.

Tenants can take advantage of nearby amenities and shopping locations like Ares, Bain Depot, Leon's, Quartier Hockey and WimGym. Across the highway from you can find Canadian Tire, Adonis, Cinemas Guzzo, Bureau en Gros, McDonald's, Winners and SAQ.

## Suite 2060



## Suite 2080-2082



Suite	Size (sq. ft.)	Type	Availability	Comments
2060	1,980	Retail	Immediate	Flexible space suitable for retail, industrial or office space with a 480 sq.ft. mezanine and closed offices and washrooms.
2080-2082	51,319	Industrial	Mar 2023	4 Truck-Level shipping doors (0 drive-in doors), 18' & 24' Clear Height ±5% Office

For more info please contact:

**GARY DAPONTE\***  
 C 514-831-9335  
 P 514.288.1800 X 350  
 gdaponte@epicquebec.com

\*Leasing Coordinator



epicquebec.com